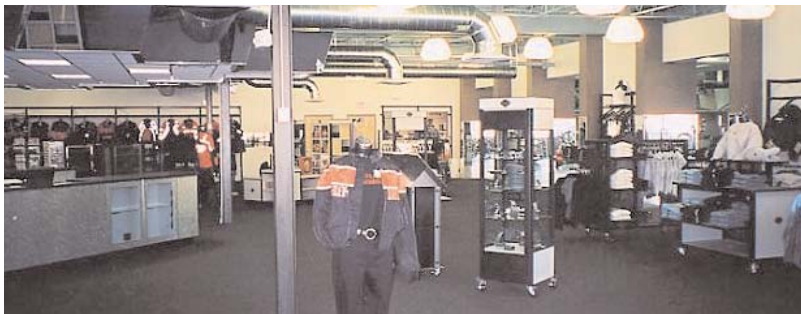


Project Type: Retail

Renovations

Project: Paramount Harley-Davidson
Location: 266 Waverly Street
Framingham, MA
Client: James and Richard Pilavin
Size: 38,000 sq.ft.



Project Description:

A former supermarket and strip mall was redesigned for the development of a Harley-Davidson & Buell Motorcycle dealership. The project included new entrances for motorcycle sales, service, parts, accessories, and general merchandise. The retail area (approximately 17,600 sq. ft.) consists of: motorcycle displays, sales and administrative offices, parts counter and parts display, motor-clothes, collectibles and motor-accessory displays, restrooms customer lounge and retail storage. The service area (approximately 20,400 sq. ft) consists of service bays; offices; restrooms; break/training room; detailing room; parts and motorcycle storage. The project also included modifications to the exterior facade including: the installation of a new aluminum storefront and brick base infill; entry doors; lighting; signage/graphics. Site improvements consisted of new sidewalks; planters; paving; site lighting, loading dock and service entrances. The dealership opened for business January 2001.