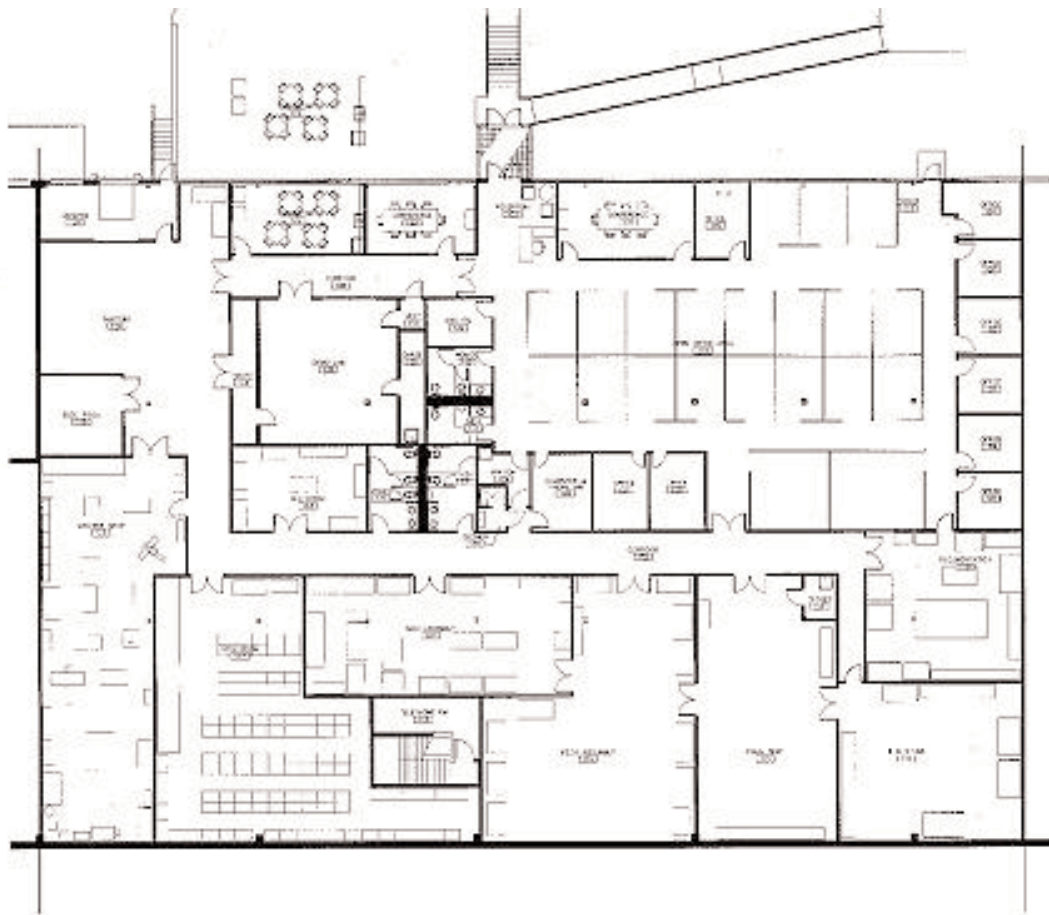


Project Type: Office

Tenant Improvement

Project: Solitec Water Processing Inc.
Location: Billerica, MA
Size: 21,600 SF

Project Description: This project consisted of the design and development of interior space planning for a leading water processing company. Approximately 21,600 sq. ft. of the tenant fit-up was designed for its corporate offices and manufacturing facilities. The program included the development of offices; conference room; kitchen; toilet rooms; machine shop; telephone and communications; manufacturing/assembly; engineering/mechanical labs; research and development; loading/shipping and a new glass enclosed entry vestibule.



FLOOR PLAN

SOLITEC WAFER
PROCESSING, INC.
RIVERVIEW COMMERCE CTR
495 WOBURN ST
TEWKSBURY, MA